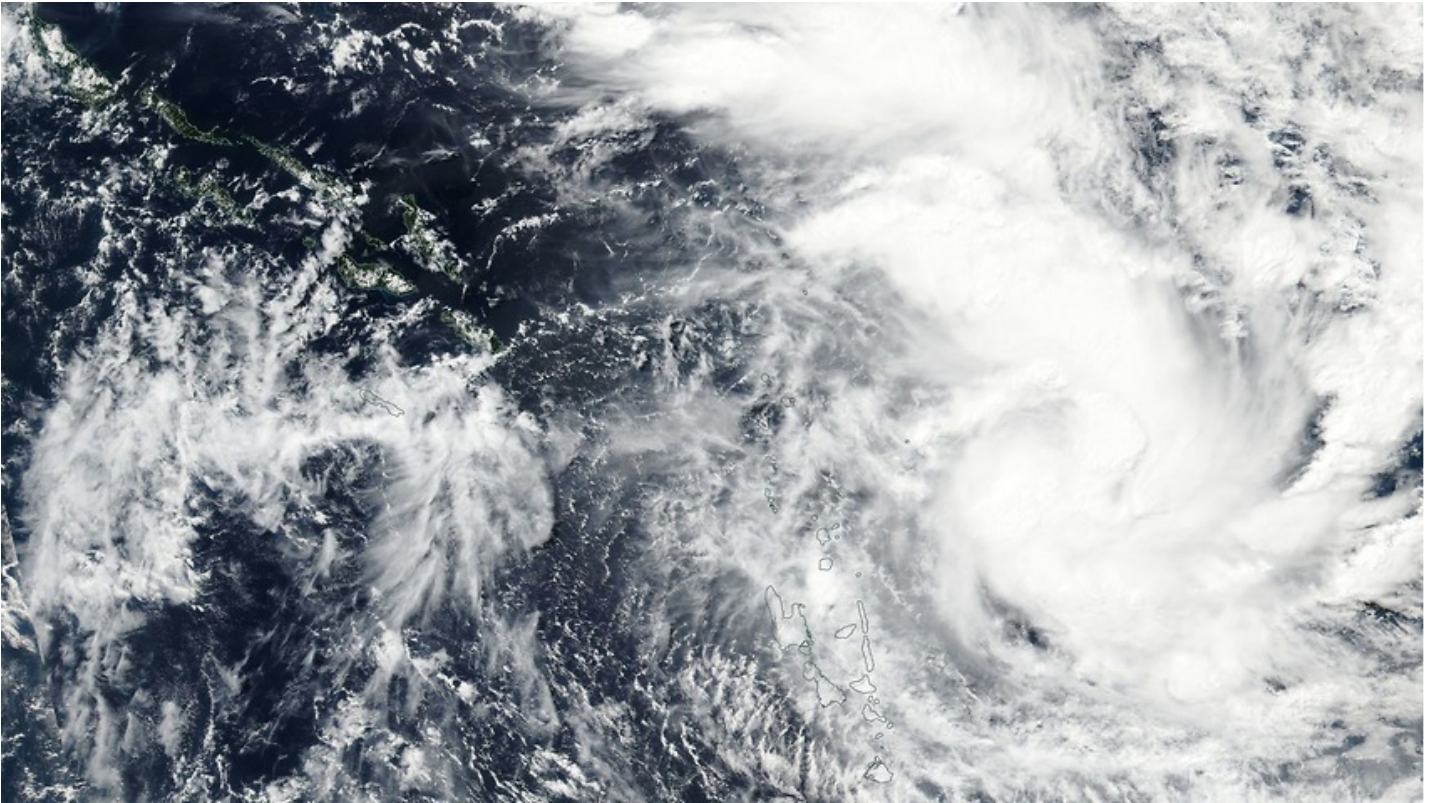


## Category three Cyclone Donna bears down on Vanuatu



A handout photo made available by NASA shows Cyclone Donna forming over Vanuatu, 03 May 2017. Source: NASA

Australians have been warned to reconsider travel to Vanuatu as category three Cyclone Donna bears down on the Pacific island nation.

Updated Updated 4 May 2017

Holiday-makers have been warned to reconsider their travel plans to Vanuatu as an out-of-season cyclone bears down on the coast.

The Department of Foreign Affairs and Trade said international and domestic flights are expected to be disrupted because of Cyclone Donna from Friday.

Cruise ships won't be able to enter Vanuatu waters.

"Strong winds, heavy rains and storm surges may occur in coastal areas," the DFAT travel advice update said.

"We advise Australians to reconsider travel to Vanuatu due to the likely impact of the cyclone."

The category three storm is expected to hit hard at Torba, Penama, Sanma and Malampa with destructive winds, heavy rainfall and flash flooding, according to the Vanuatu Meteorology and Geo-Hazards Department.

Vanuatu was left relatively unscathed from category two Cyclone Cook in April.

The tropical cyclone season runs from November to April.

Some areas in Vanuatu are still rebuilding following Cyclone Pam - a category five storm which hit in March 2015, killing 11 people.

Source: AAP